

MONADNOCK REGION RENOWN ARTIST ED MERREL

Works Currently Showing at Hannah Grimes Center
September Through October



Artworks may be
seen at Hannah
Grimes Center
25 Roxbury
Street Keene,
New Hampshire

Between the
hours of 8 a.m.
and 5 p.m.

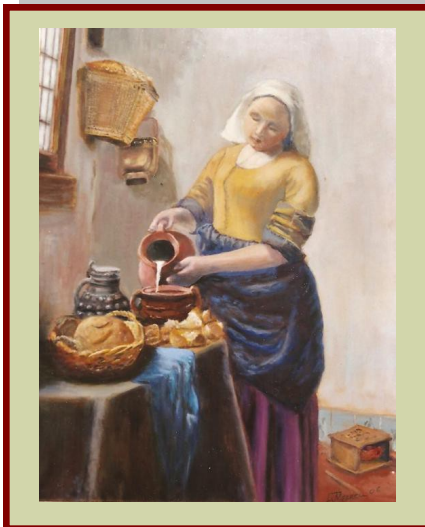
Monday
Through

Artist Background

Merrell has studied under Beda Zel Angle in NJ in classic fashion. He has also studied with Alex Farquarson and Mary Iselin at the Sharon Arts Center for several years. Merrell has exhibited at the Keene Art at the Colony Mill Marketplace, Sharon Arts Gallery, Peterborough and Jaffrey Community Centers and the Jaffrey Library.

Artist Statement

I like to copy old masters, particularly Vermeer who was ahead of his time. There is much to be learned from copying, but I personalize them by adding a still life to the composition. I derive great satisfaction from realistically painting what I see and feel. Elements depicted in my paintings include the studies of light and anatomy. As a sailor, I am drawn to the endless motion of the ocean and have depicted in my works hazy foggy backdrops and water and reflections. I also incorporate my own religious theme in my works.



Contact the Artist
Ed Merrell

603-532-8738 main10@myfairpoint.net
<http://edward-merrell.artistwebsites.com>